

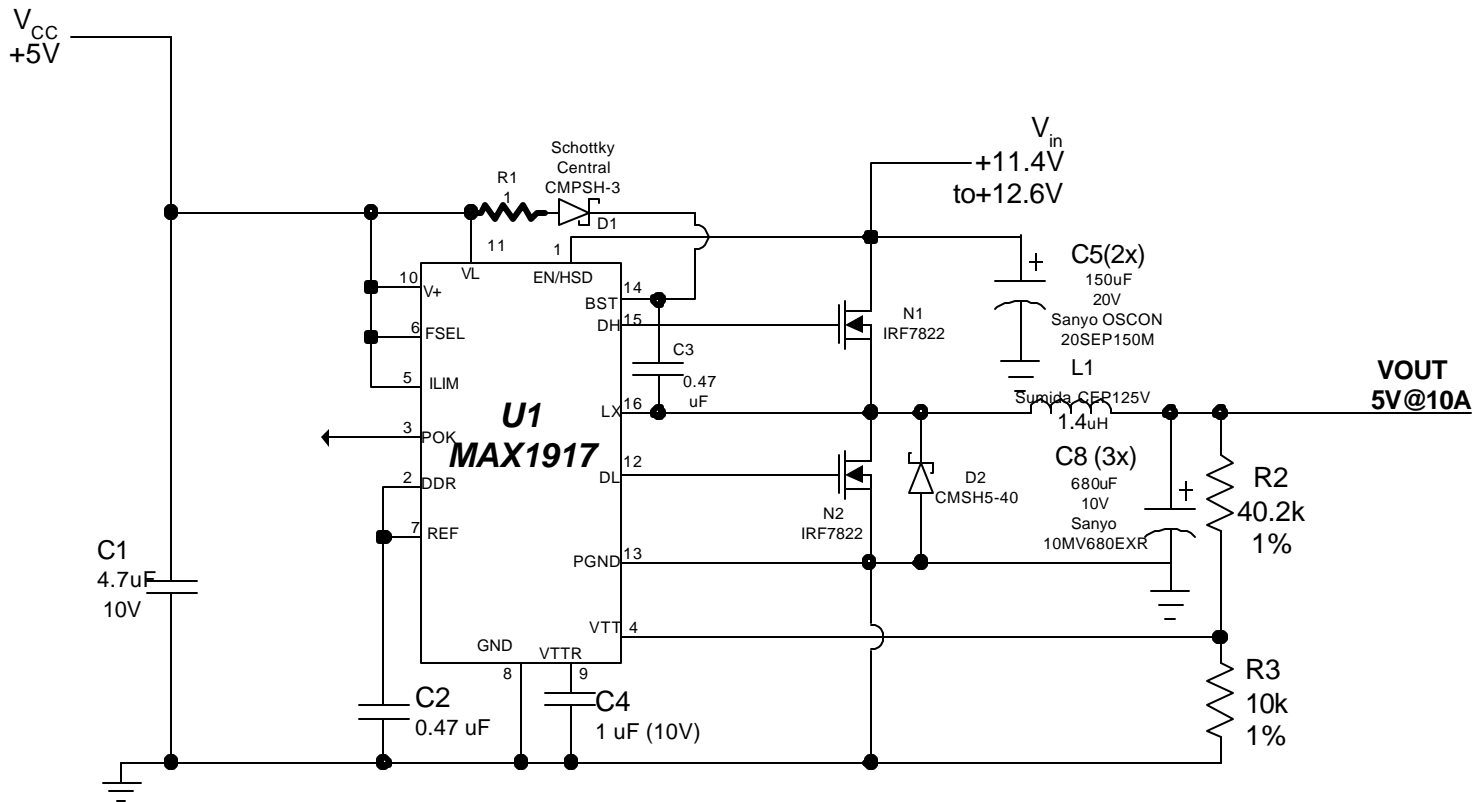
## Servers

**Input:** +11.4V to +12.6V **Output:** 5V (+/-5%); Maximum load=10A

5/1/02 - Sudha Durvasula

**+11.4V - +12.6V to 5V @10 A.** This uses the MAX1917.

This circuit has not been tested.



**Bill of Materials:**

DESIGNATION	QTY	DESCRIPTION
C1	1	4.7 $\mu$ F 10V ceramic capacitors TAIYO YUDEN LMK316BJ475ML
C2, C3	2	0.47 $\mu$ F ceramic capacitor (0805)
C4	1	1 $\mu$ F 10V ceramic capacitors TAIYO YUDEN LMK212BJ105MG
C5	2	150 $\mu$ F 20V organic semiconductor capacitors Sanyo 20SEP150M
C8	3	680 $\mu$ F 10V aluminum electrolytic capacitors Sanyo 10MV680EXR
D1	1	100 mA 30V Schottky diode Central Semiconductor CMPSH-3
D2	1	5A Schottky diode Central Semiconductor CMPSH5-40
L1	1	1.4 $\mu$ H (20.8A) Inductor Sumida CEP125V-1R4
N1, N2	2	N-channel MOSFET, 20V ( $R_{DS(ON)}=5m\Omega$ @ $V_{GS}=4.5V$ ) International Rectifier IRF7822
R1	1	1 $\Omega$ , 5% resistor ( 0805)
R2	1	40.2 k $\Omega$ , 1% resistor ( 0805)
R3	1	10 k $\Omega$ , 1% resistor ( 0805)
U1	1	MAX1917EEE (16 pin QSOP)